

APP CRS	Rwy ldg	<b>4993</b>
<b>263°</b>	TDZE	<b>282</b>
	Apt Elev	<b>291</b>

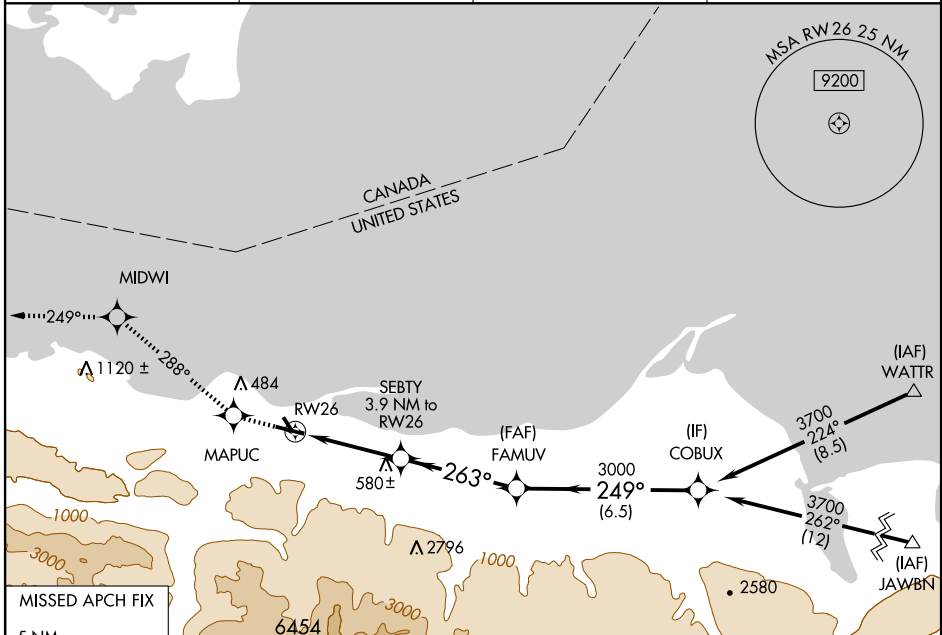
# RNAV (GPS) RWY 26

PORT ANGELES/ WILLIAM R. FAIRCHILD INTL (CLM)

**⚠** Circling NA south of Rwy 8-26. DME/DME RNP- 0.3 NA.  
**⚠** Visibility reduction by helicopters NA. When local altimeter setting not received, use Friday Harbor altimeter setting; increase all MDA 100 feet and visibility Cats B/C/D ½ mile.

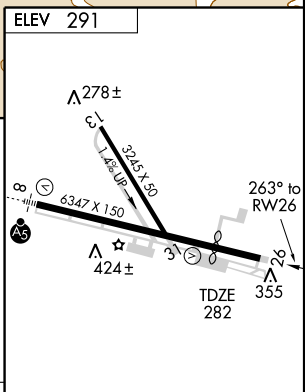
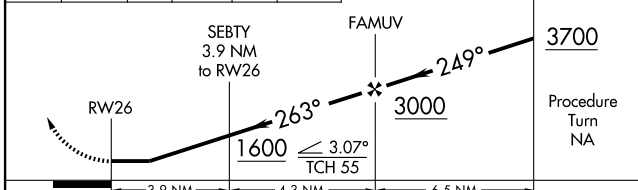
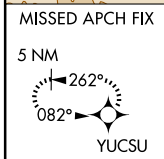
MISSED APPROACH: Climb to 5400 direct MAPUC and via track 288° to MIDWI and via track 249° to YUCSU and hold.

ASOS <b>135.175</b>	WHIDBEY APP CON* <b>118.2 285.65</b>	CLNC DEL <b>124.15</b>	UNICOM <b>122.975 (CTAF)</b> <b>📻</b>
------------------------	---	---------------------------	--



NW-1, 13 JAN 2011 to 10 FEB 2011

NW-1, 13 JAN 2011 to 10 FEB 2011



CATEGORY	A	B	C	D
LNVA MDA	940-1 658 (700-1)	940-1 658 (700-1)	940-1 658 (700-1)	940-2 658 (700-1)
CIRCLING	940-1 649 (700-1)	940-1 649 (700-1)	940-1 649 (700-1)	940-2 649 (700-2)

MIRL Rwy 8-26 **📻**  
 REIL Rwy 26