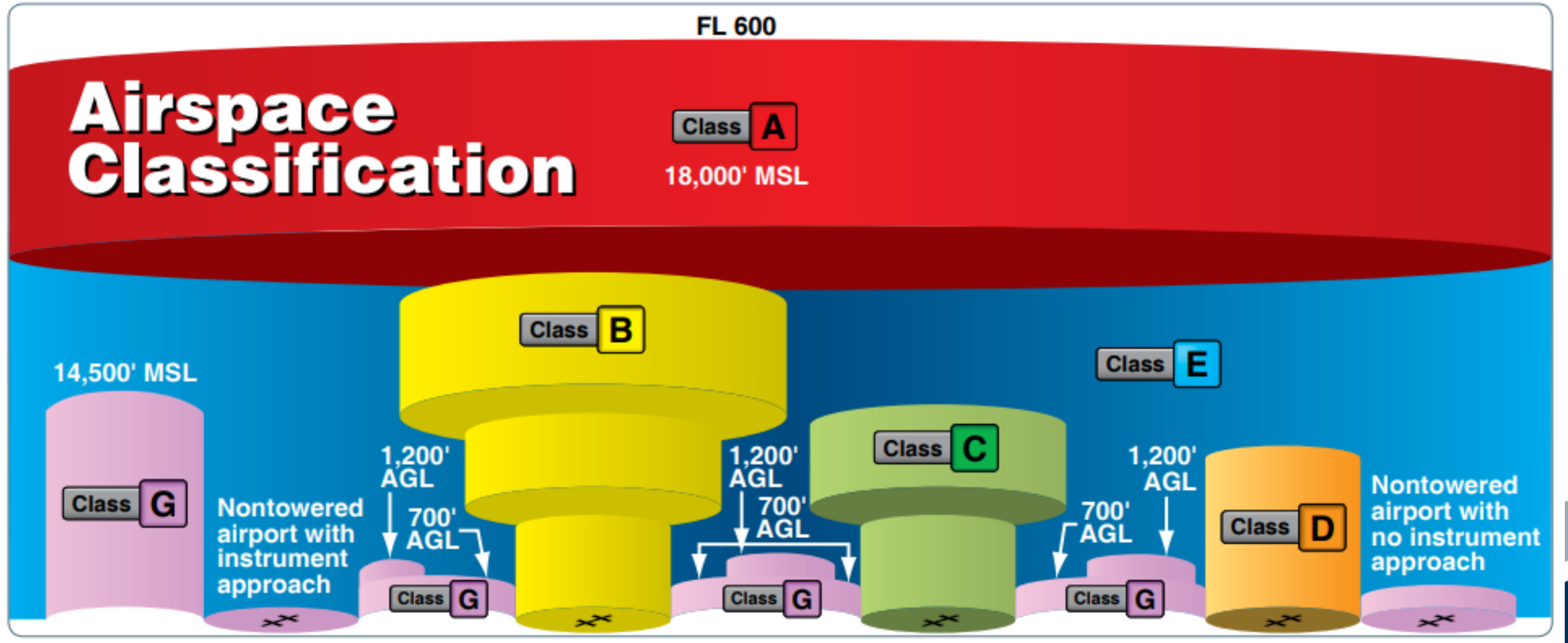


# PRIVATE PILOT COURSE

AIRSPACE



# AIRSPACE PROFILE



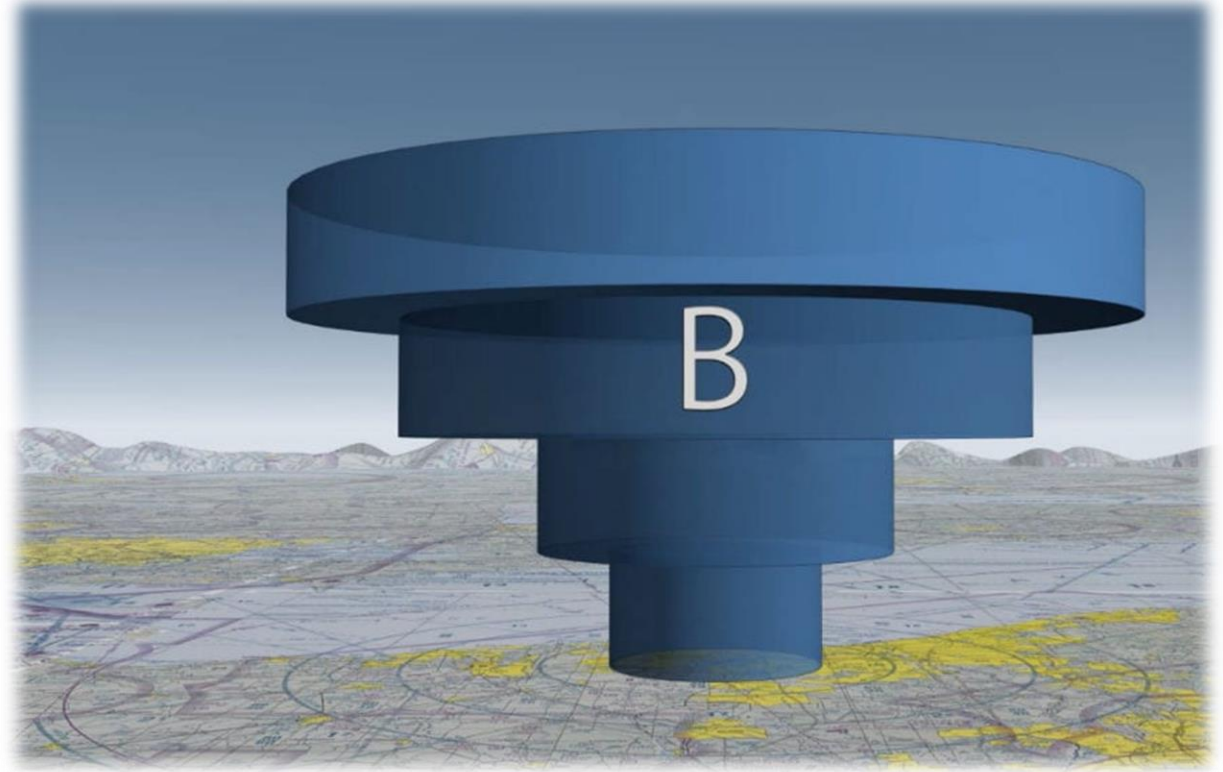
# CLASS A

---



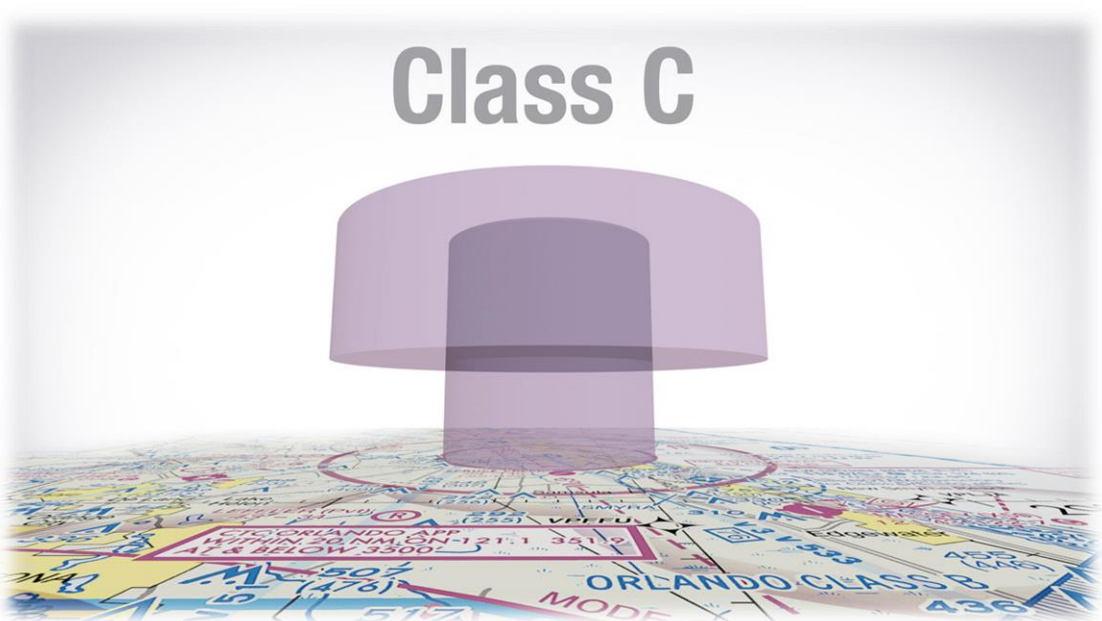
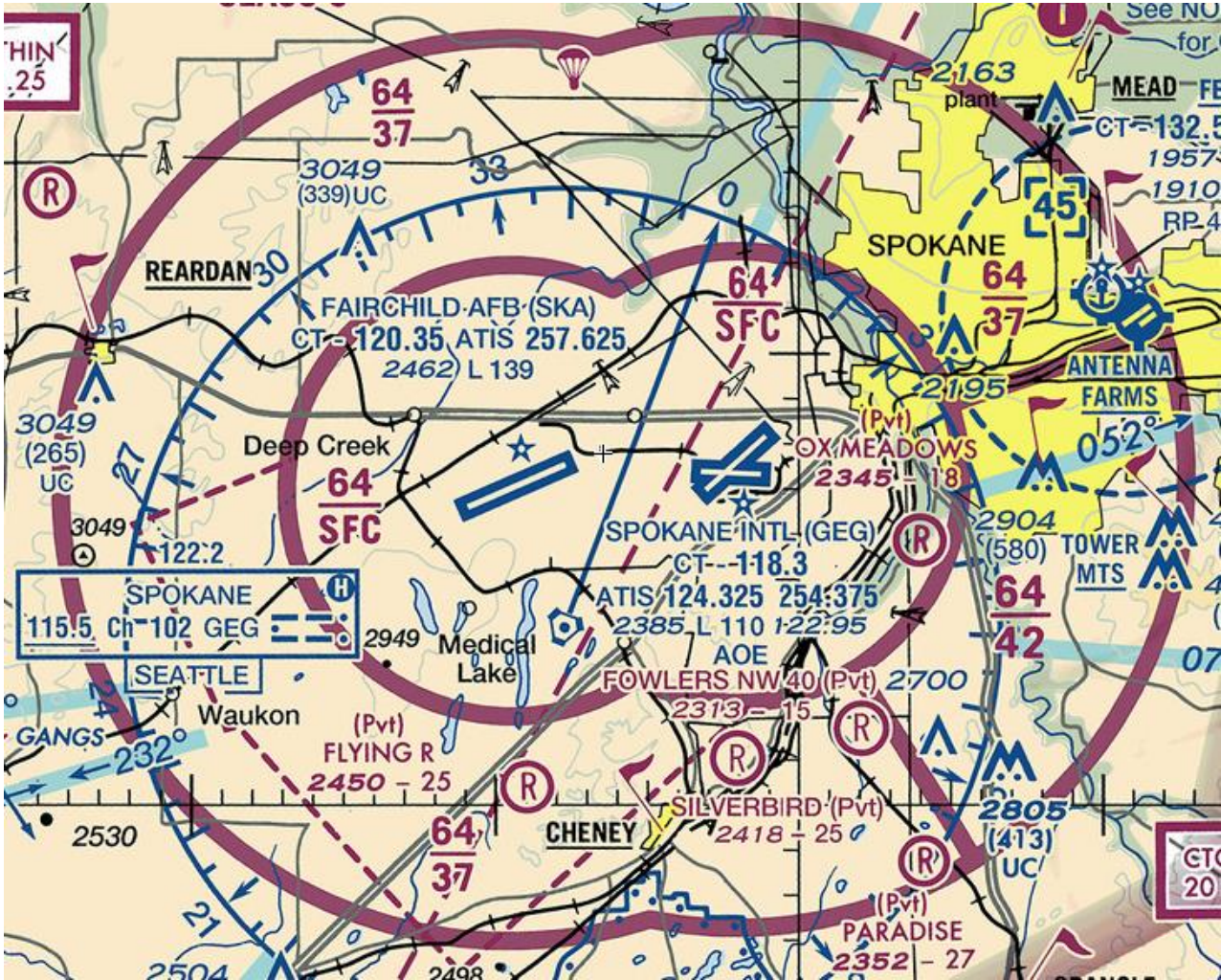


# CLASS B



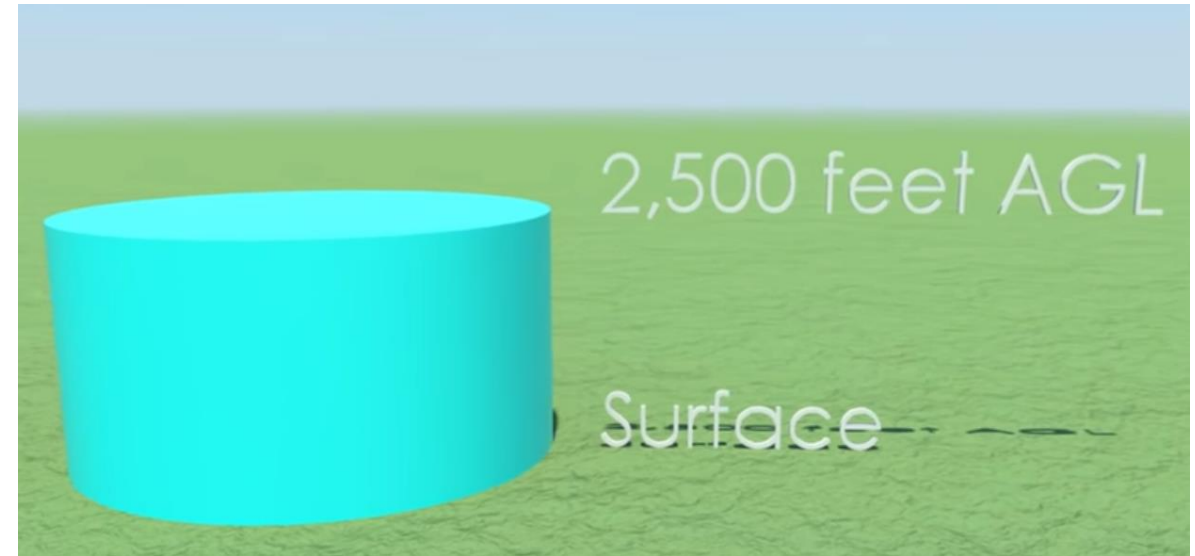
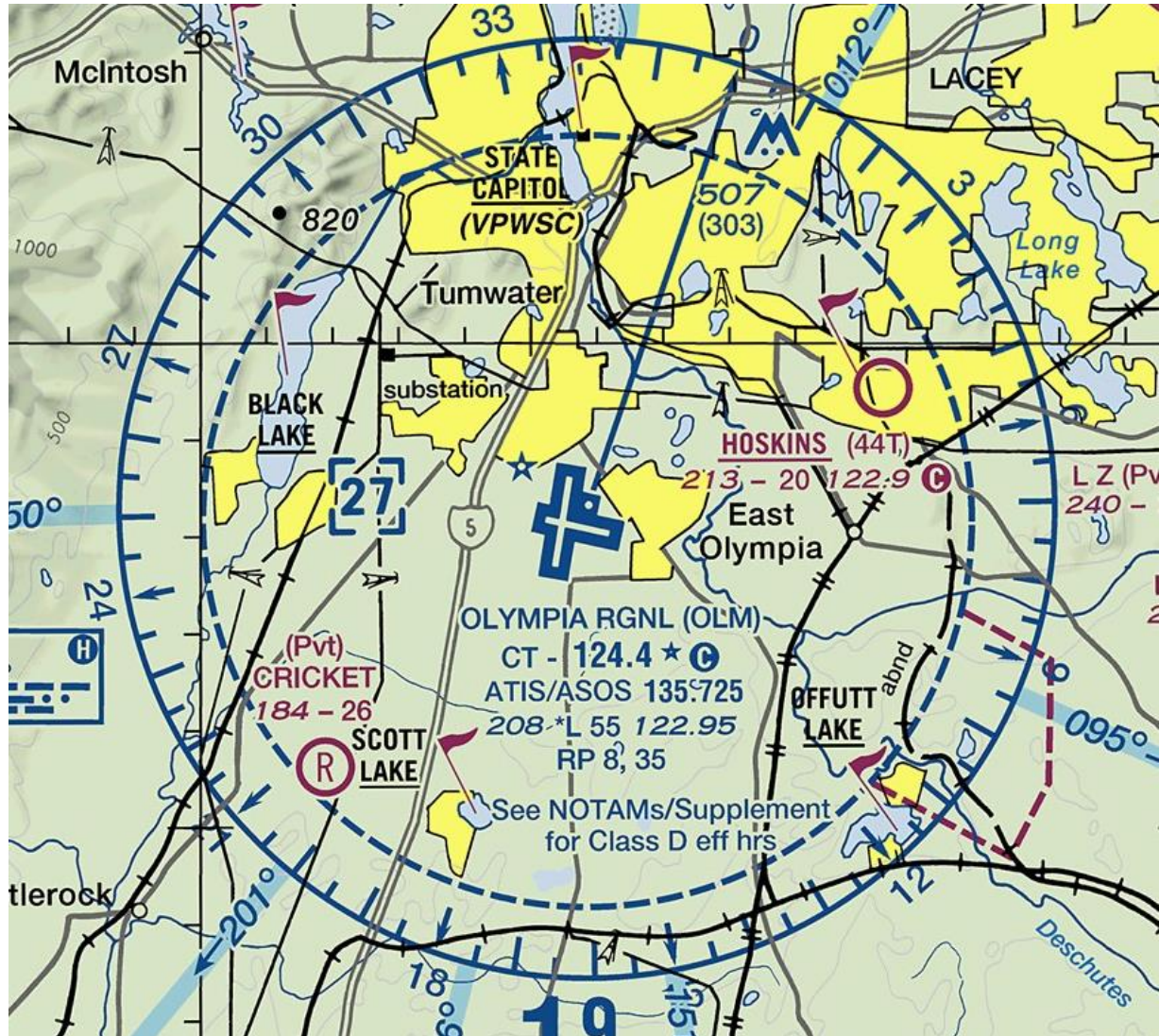


# CLASS C



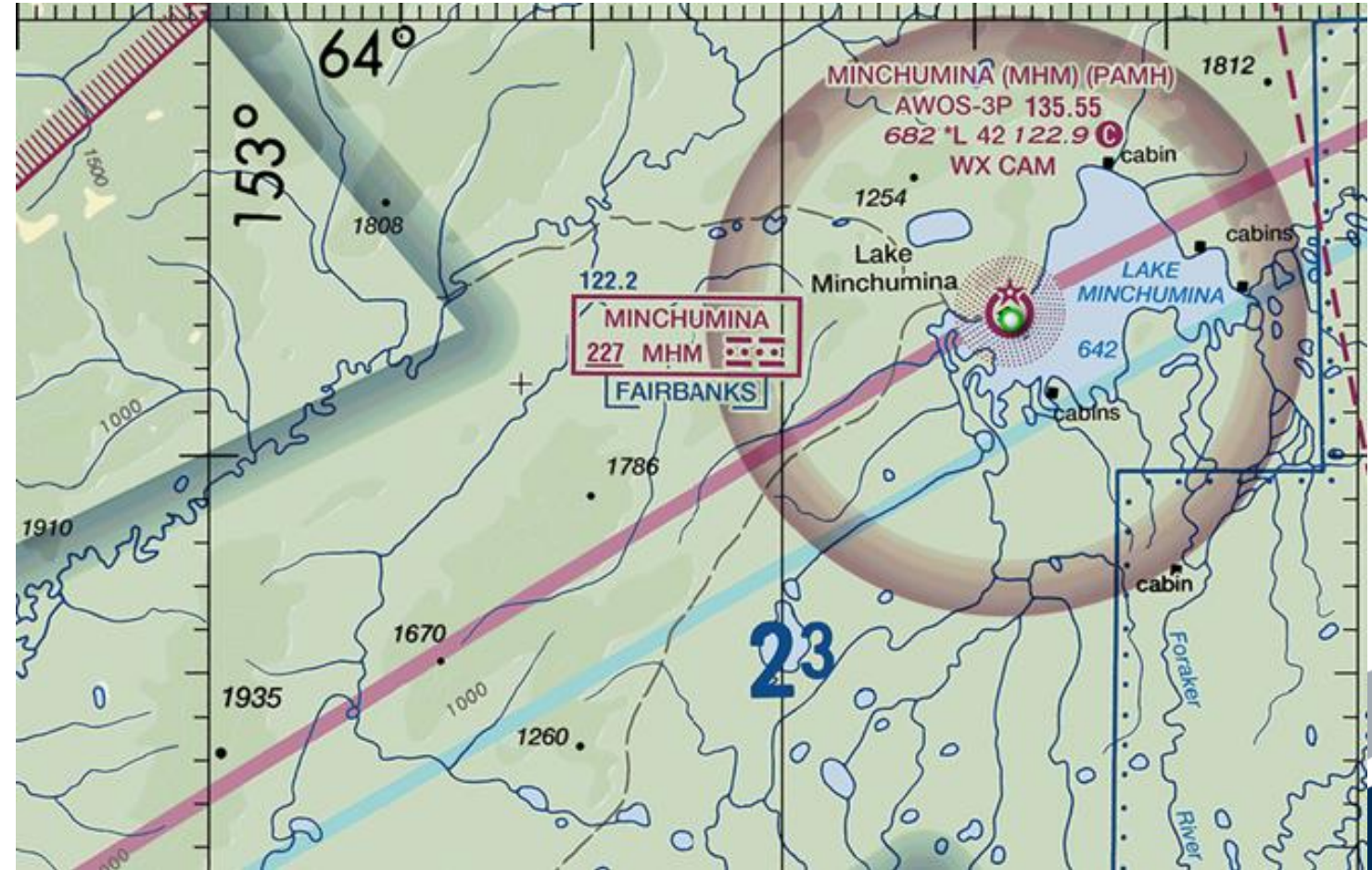
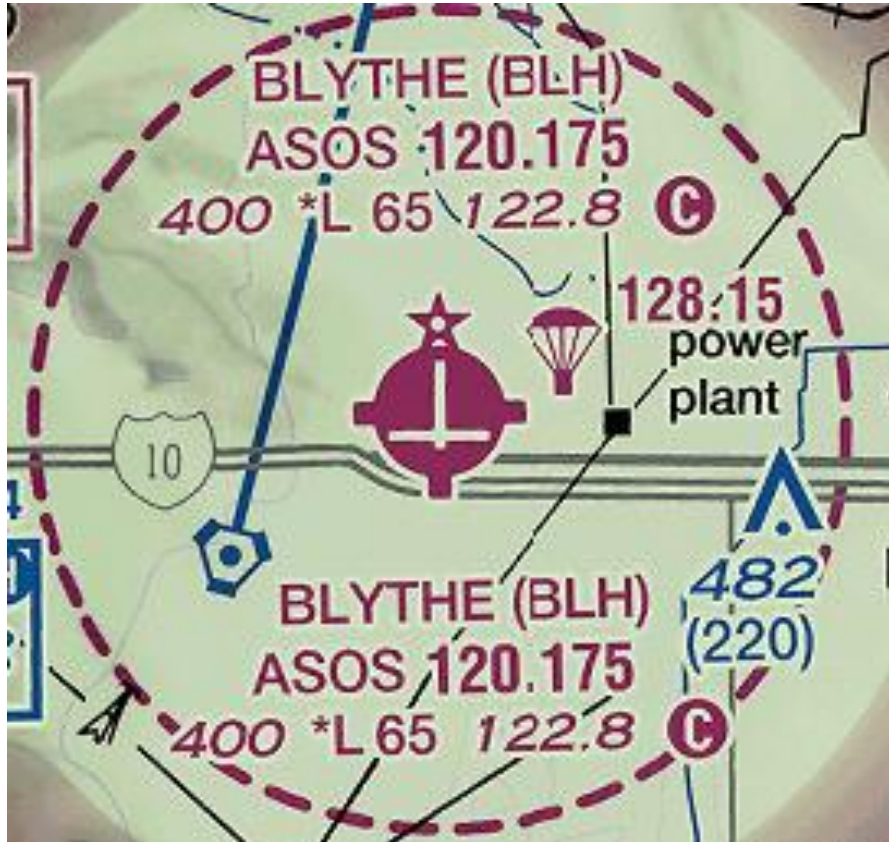


# CLASS D



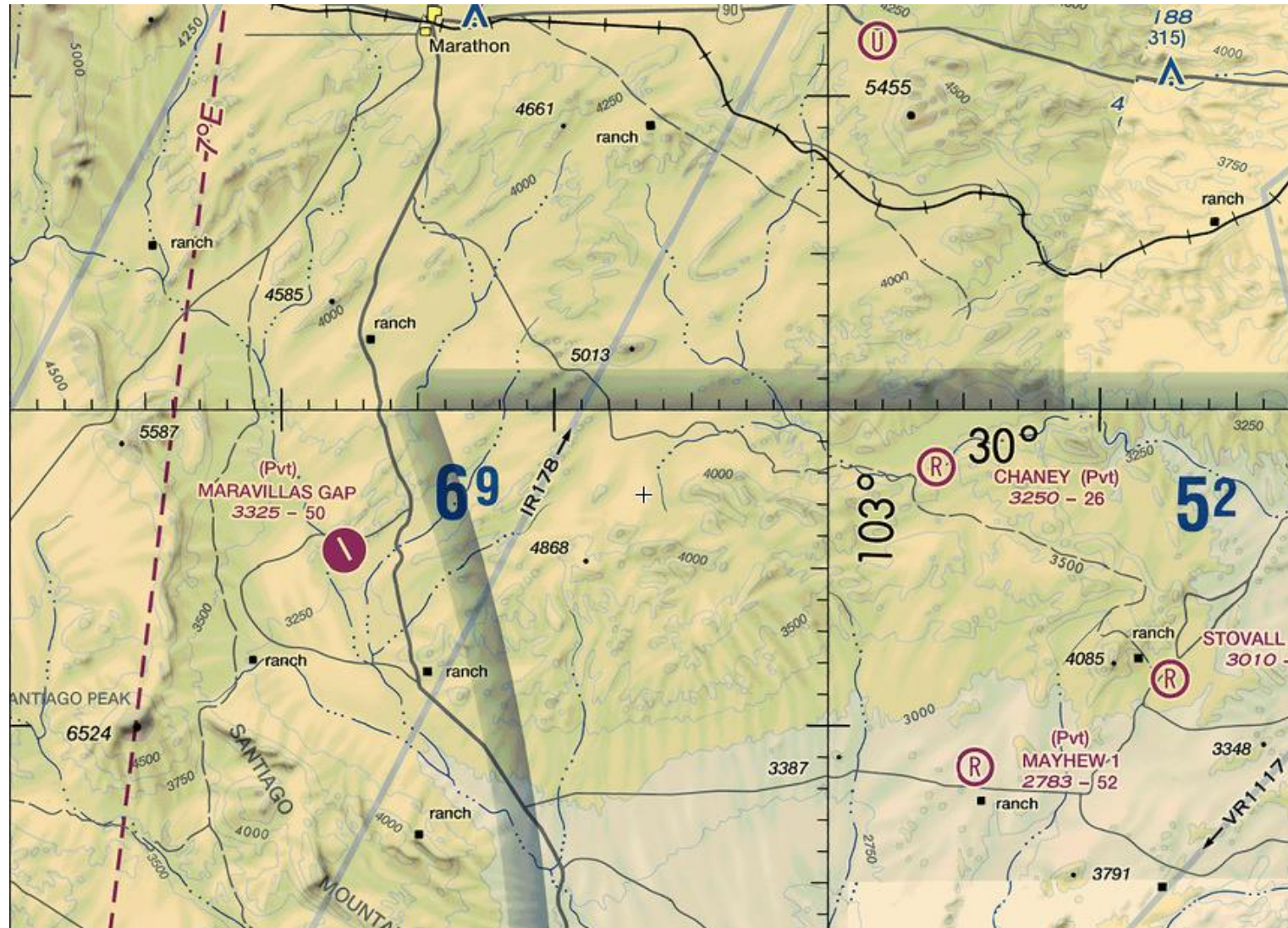


# CLASS E



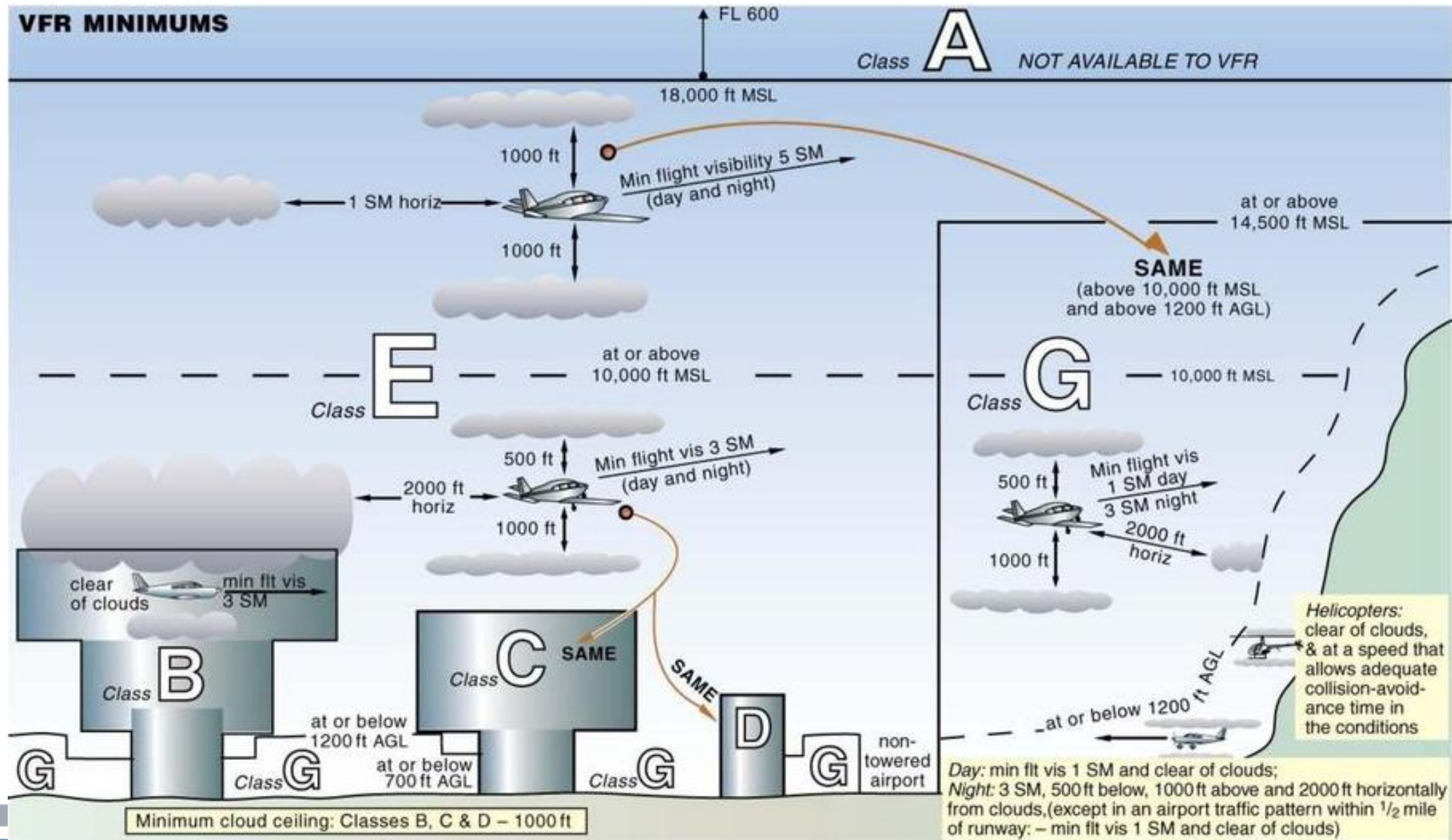


# CLASS G





# VFR WEATHER MINIMUMS





# PROHIBITED AREAS

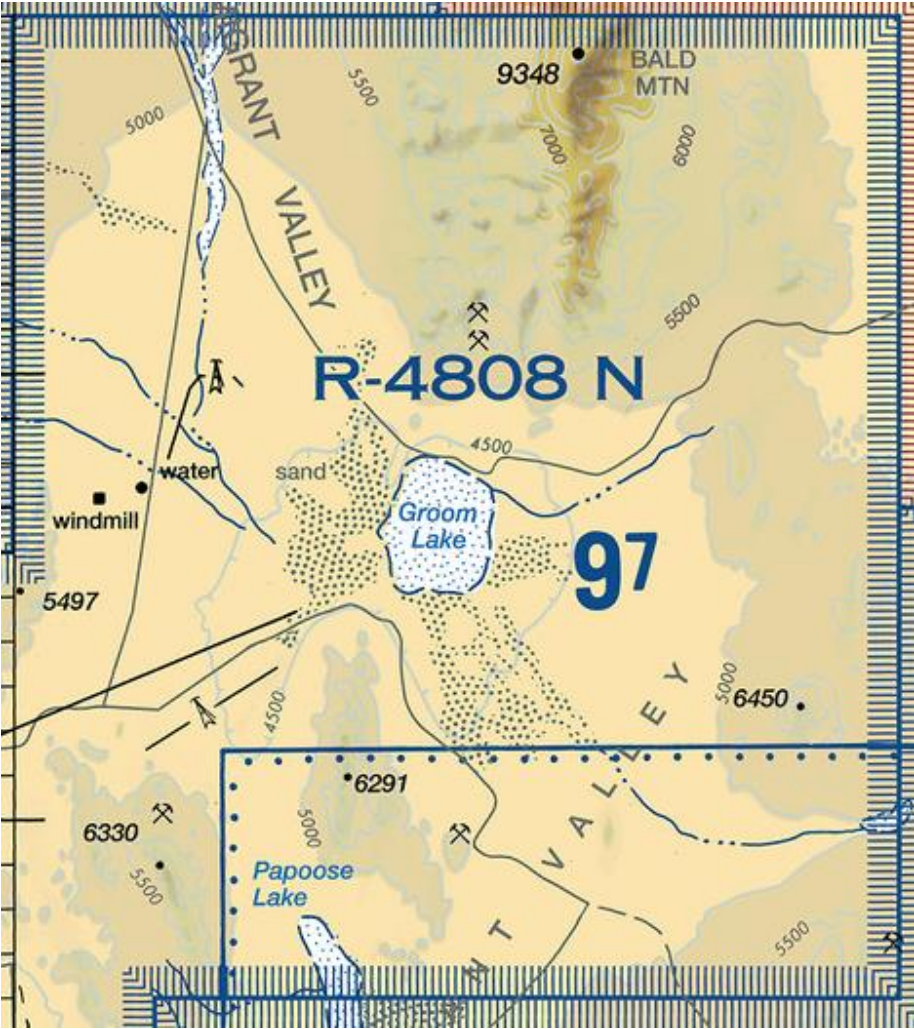


NUMBER	ALTITUDE	TIME OF USE	+	CONTROLLING AGENCY/ CONTACT FACILITY	FREQUENCIES
P-51	TO BUT NOT INCL 2500	CONTINUOUS		NO A/G	





# RESTRICTED AREAS

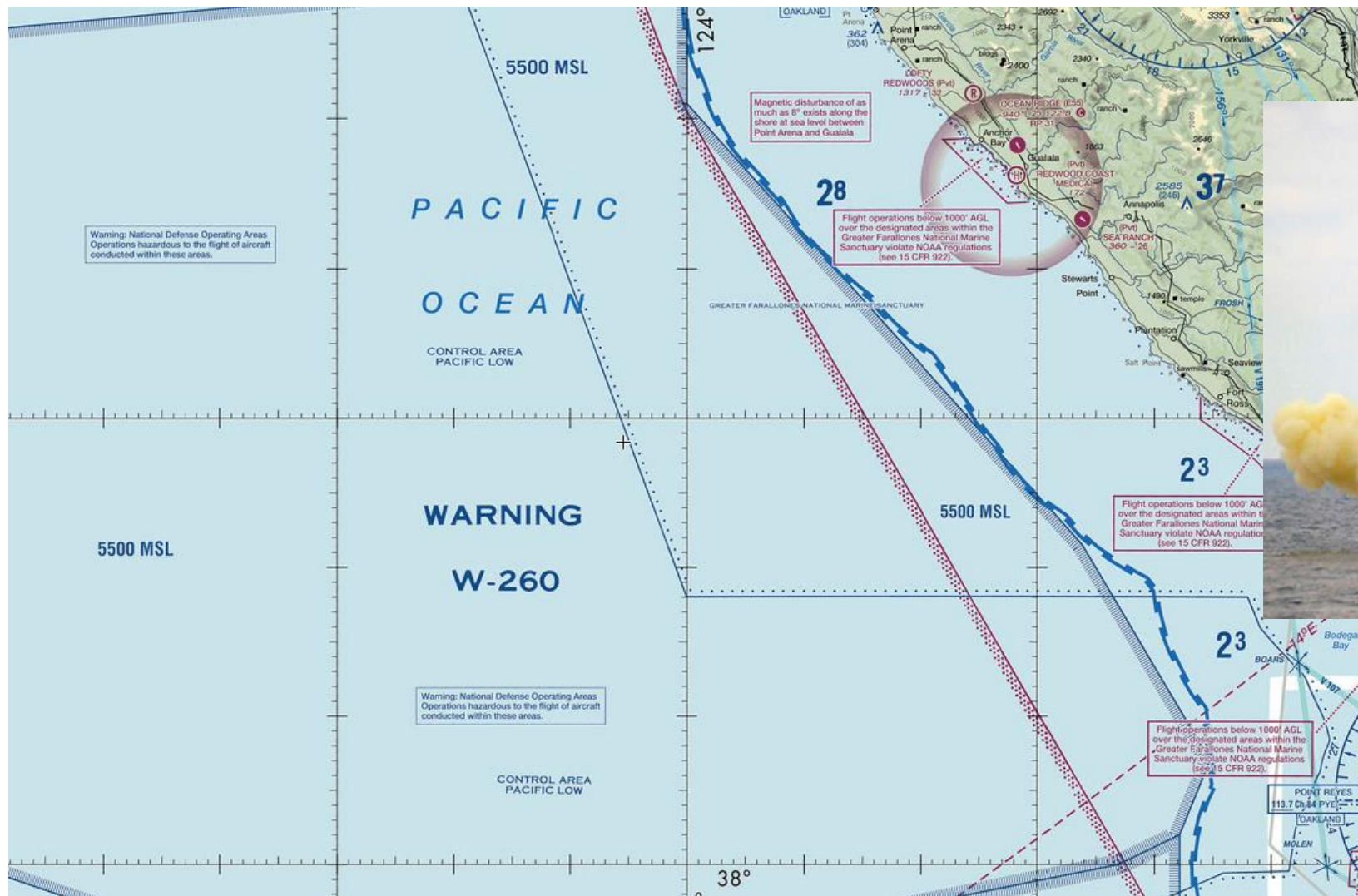


NUMBER	ALTITUDE	TIME OF USE	CONTROLLING AGENCY/ CONTACT FACILITY	FREQUENCIES
R-2502 N	UNLIMITED	CONTINUOUS	JOSHUA CON FAC	120.25
R-2505	UNLIMITED	CONTINUOUS	JOSHUA CON FAC	133.65 120.25
R-2506	TO 6000	SR-SS MON-FRI	JOSHUA CON FAC	133.65 120.25
R-2524	UNLIMITED	CONTINUOUS	JOSHUA CON FAC	133.65 120.25
R-4806 E	100 AGL TO UNLIMITED	0500-2000 MON-SAT†	NELLIS RANGE CON	126.65
R-4806 W	UNLIMITED	CONTINUOUS +	NELLIS RANGE CON	126.65
R-4807 A	UNLIMITED	0600 MON-1900 FRI†	NELLIS RANGE CON	126.65
R-4807 B	UNLIMITED	CONTINUOUS	NELLIS RANGE CON	126.65
WARNING: R-4806 W, R-4807 A, AND R-4807 B CONTAIN MANY UNEXPLODED BOMBS, ROCKETS, AND OTHER ORDNANCE THAT MAY EXPLODE IF DISTURBED. NO AIRFIELD OR ACTIVE RUNWAY EXISTS WITHIN THESE AREAS; HOWEVER, SIMULATED AIRFIELDS UTILIZED AS BOMBING TARGETS DO EXIST. AIRCRAFT LANDINGS IN R-4806 W, R-4807 A, AND R-4807 B ARE AT THE PILOT'S OWN RISK.				
R-4808 N, S	UNLIMITED	CONTINUOUS	NELLIS RANGE CON	126.65
R-4809	UNLIMITED	CONTINUOUS	NELLIS RANGE CON	126.65



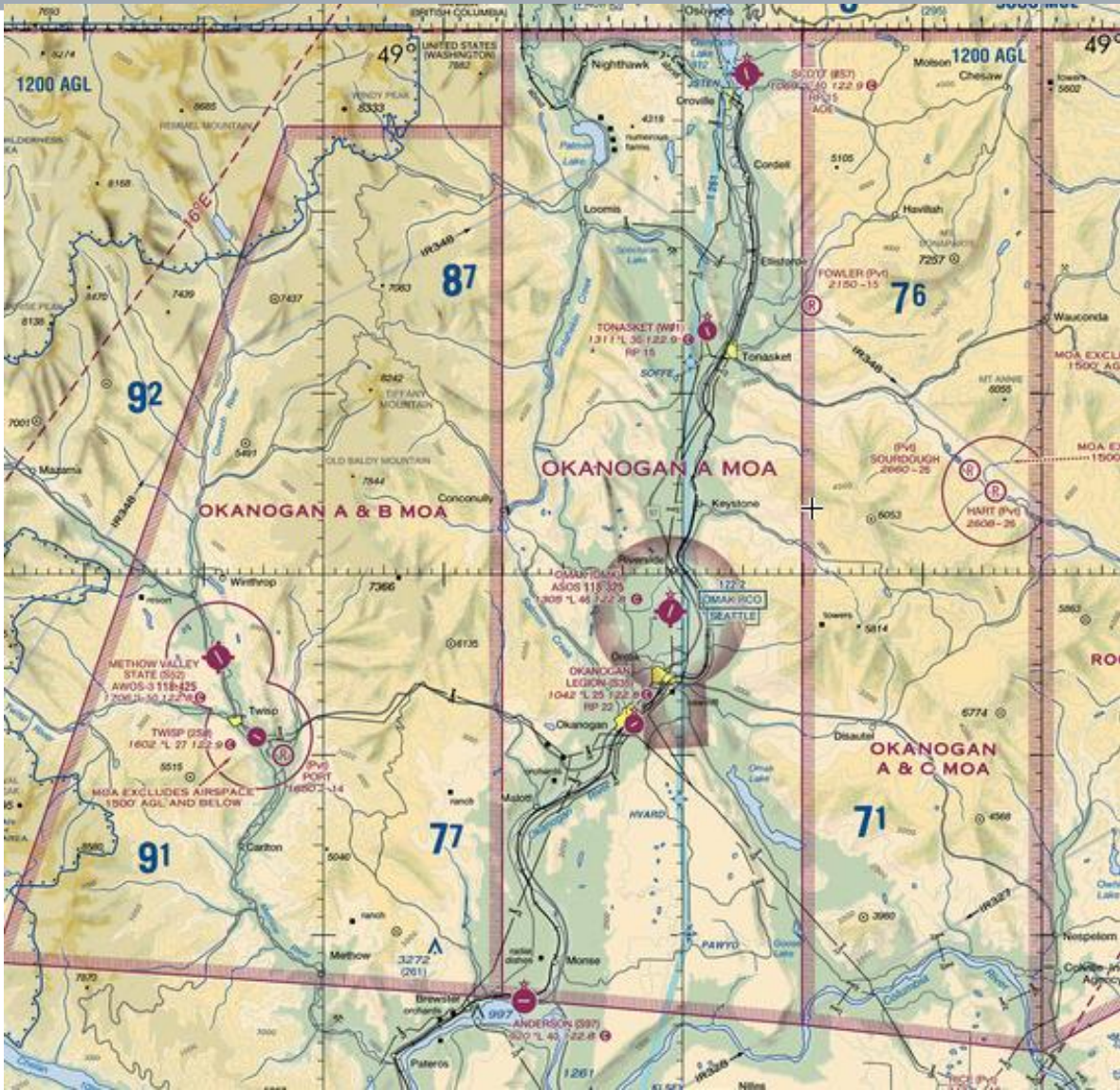


# WARNING AREAS





# MILITARY OPERATIONS AREAS



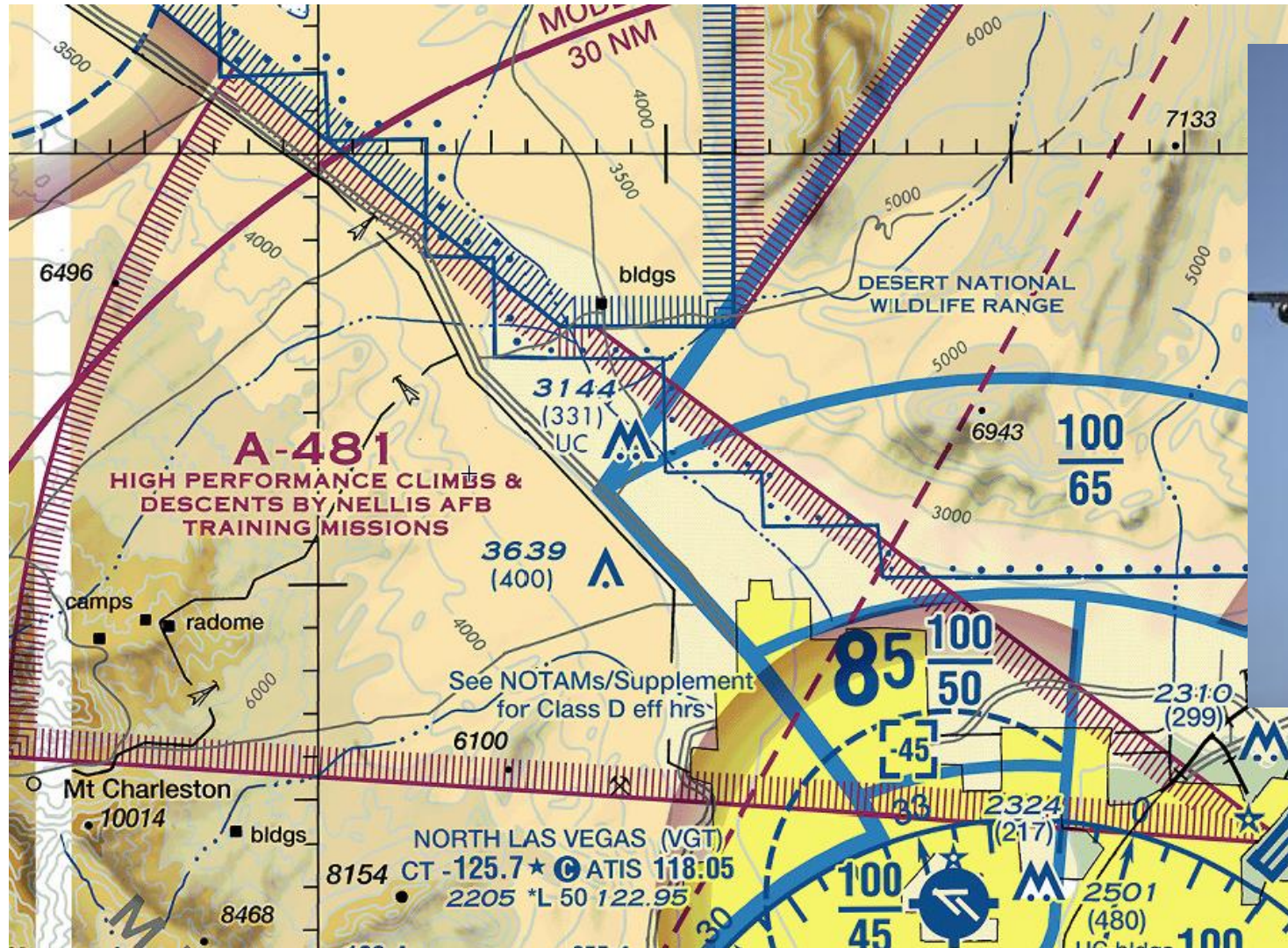
MOA NAME	ALTITUDE*	TIME OF USE†	CONTROLLING AGENCY/ CONTACT FACILITY	FREQUENCIES
BOARDMAN	4000	0730-2359 MON-FRI ‡6 HRS IN ADVANCE	SEATTLE CNTR	132.6 269.35
BOARDMAN LOW	500 AGL TO BUT NOT INCL 4000	0730-2359 MON-FRI ‡6 HRS IN ADVANCE	SEATTLE CNTR	132.6 269.35
CHINOOK A, B	300 TO 5000	INTERMITTENT-2 HRS IN ADVANCE BY NOTAM SR-SS	WHIDBEY ISLAND NAS APP	118.2 285.65
EEL A, B, C, D	11,000	INTERMITTENT BY NOTAM	SEATTLE CNTR	
OKANOGAN A	9000	INTERMITTENT BY NOTAM	SEATTLE CNTR	126.1 291.6
OKANOGAN B, C	300 AGL TO BUT NOT INCL 9000	INTERMITTENT BY NOTAM	SEATTLE CNTR	126.1 291.6
OLYMPIC	6000	BY NOTAM	SEATTLE CNTR	125.1 319.2
RAINIER 1, 2	2000 TO 9000	INTERMITTENT BY NOTAM	SEATTLE TRACON	
REDHAWK A, B, C	11,000	INTERMITTENT BY NOTAM	SEATTLE CNTR	
ROOSEVELT A	9000	INTERMITTENT BY NOTAM	SEATTLE CNTR	126.1 291.6
ROOSEVELT B	300 AGL TO BUT NOT INCL 9000	INTERMITTENT BY NOTAM	SEATTLE CNTR	126.1 291.6

\*Altitudes indicate floor of MOA. All MOAs extend to but do not include FL 180 unless otherwise indicated in tabulation or on chart.  
†Other times by DoD NOTAM.





# ALERT AREAS





# MILITARY TRAINING ROUTES





# MARINE SANCTUARY & WILDERNESS AREAS

